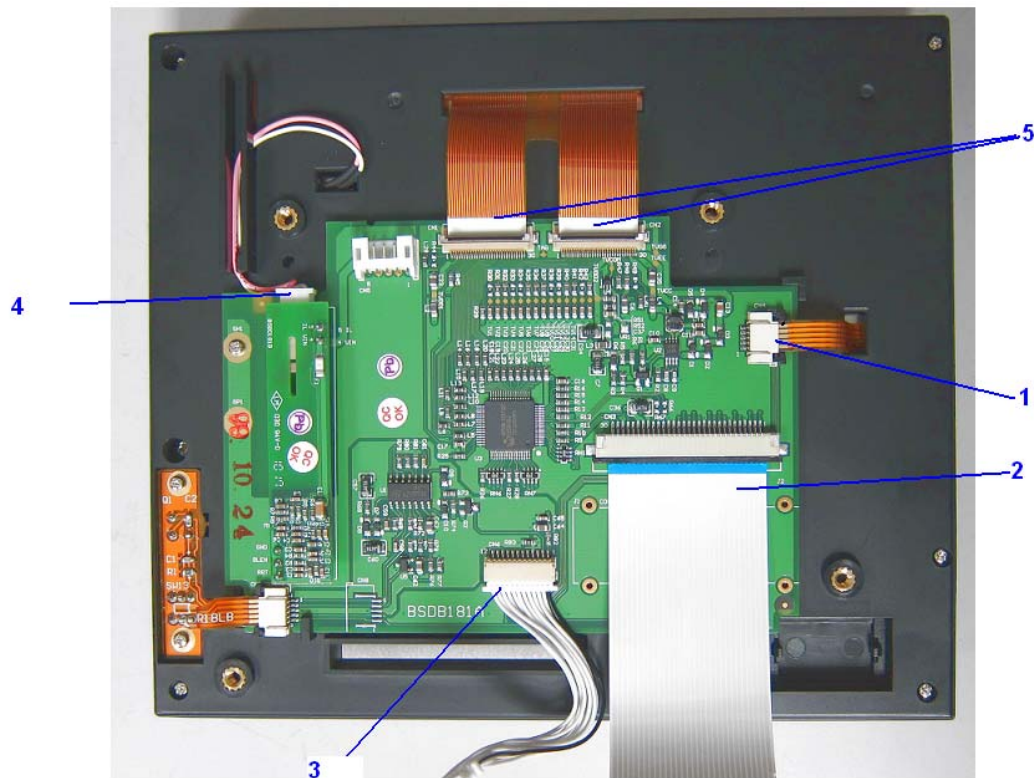
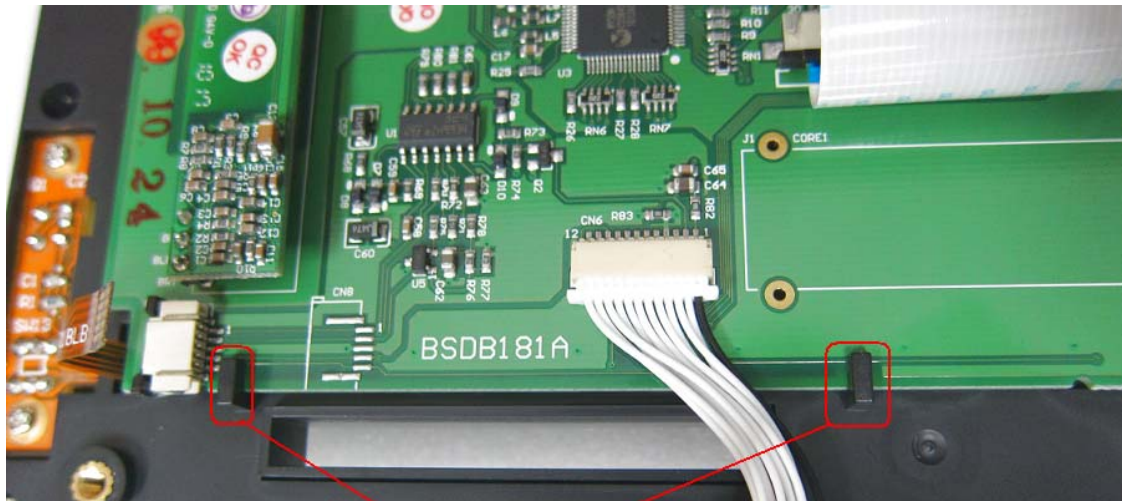


Vertical keypad replacement procedure for VR06/VR18

1. Vertical keypad is available inside LCD display board
2. Turn LCD module back side as shown below and remove all the cables carefully shown from 1 to 5.



3. Display board number BSDB181A should be pulled carefully upside to unlock from the clamps. Other wise, clamps will be broken. Please observe next figure for the location of clamps



Clamps

4. Now, display board BSDB181A will be removed from LCD module and appears as below



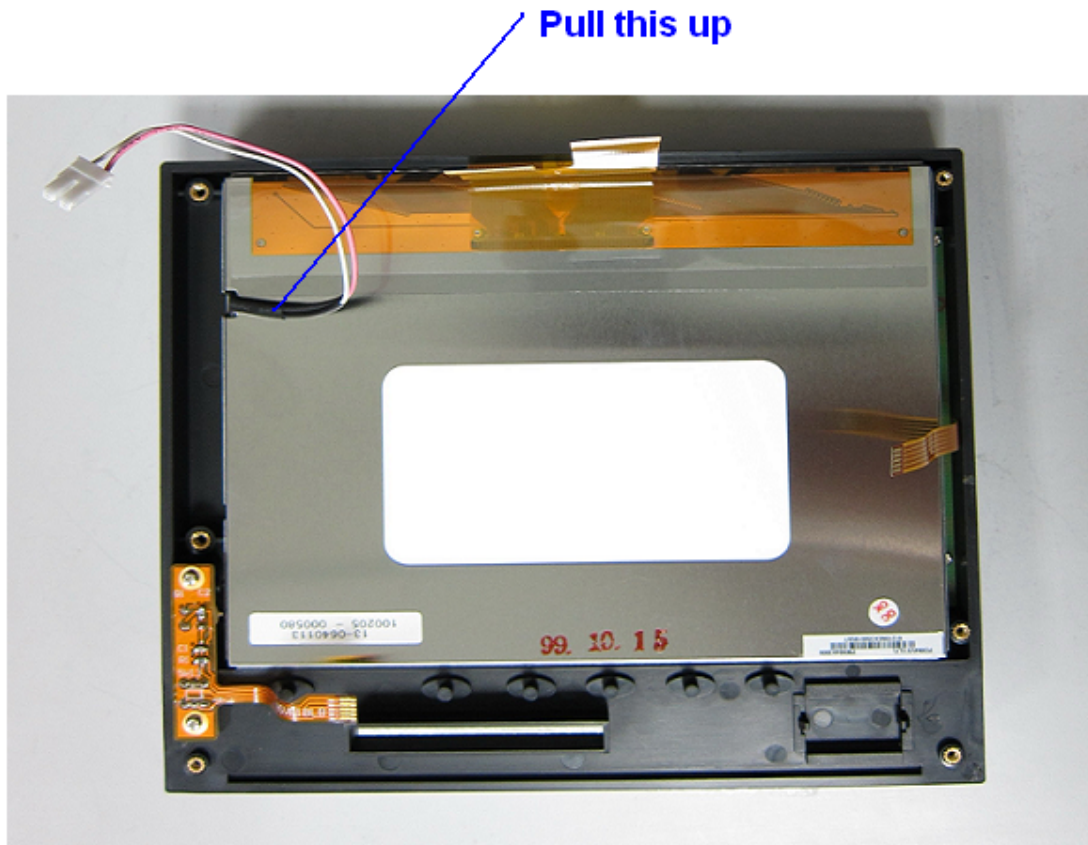
5. Now, remove 6 screws from the LCD module. All of them are not of same size.
Please do remember the screw size and their locations carefully.



6. Now, pull the black color plate outside



7. Now, pull silver color (LCD display) out side with the help of short cable



8. Then, it appears as follows

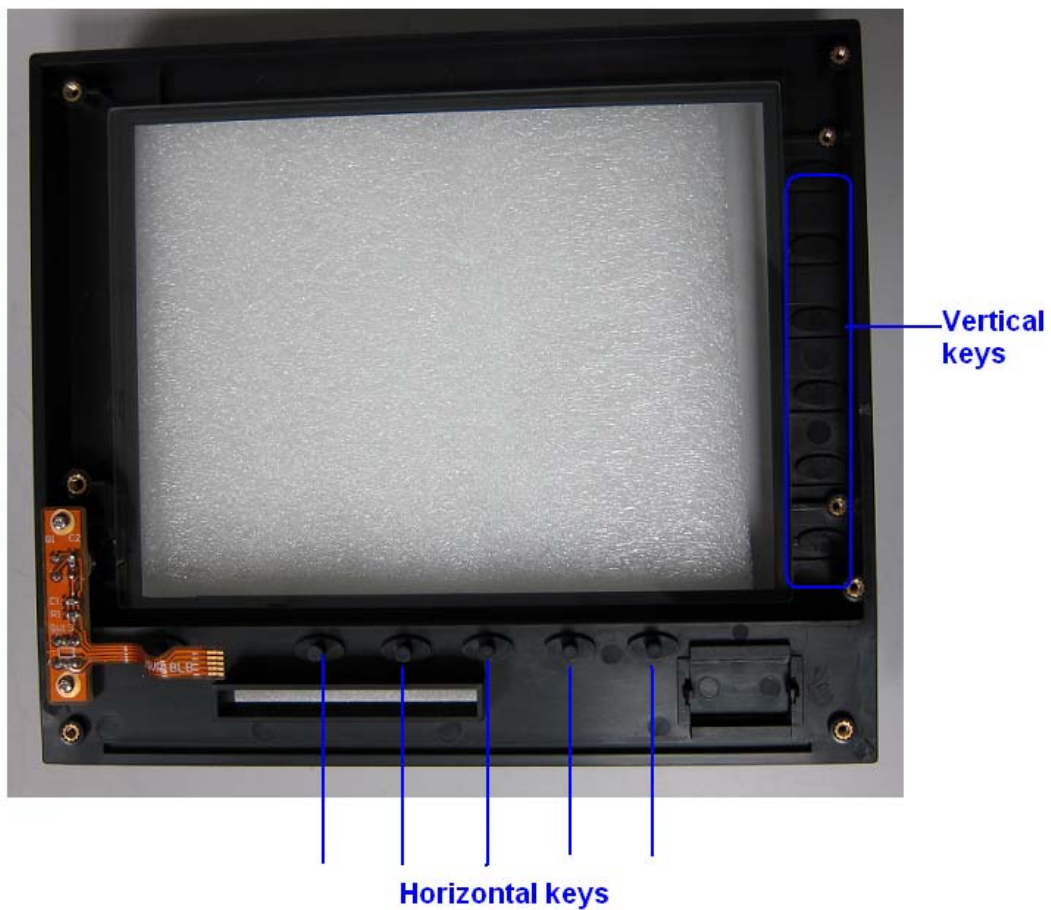


9. This is the vertical keypad



10. Remove the faulty vertical keypad and replace with new one

11. Do not tilt LCD display enclosure back side. If so, Vertical keys and horizontal keys will come out very easily.



12. Follow the steps in reverse and to re assemble