

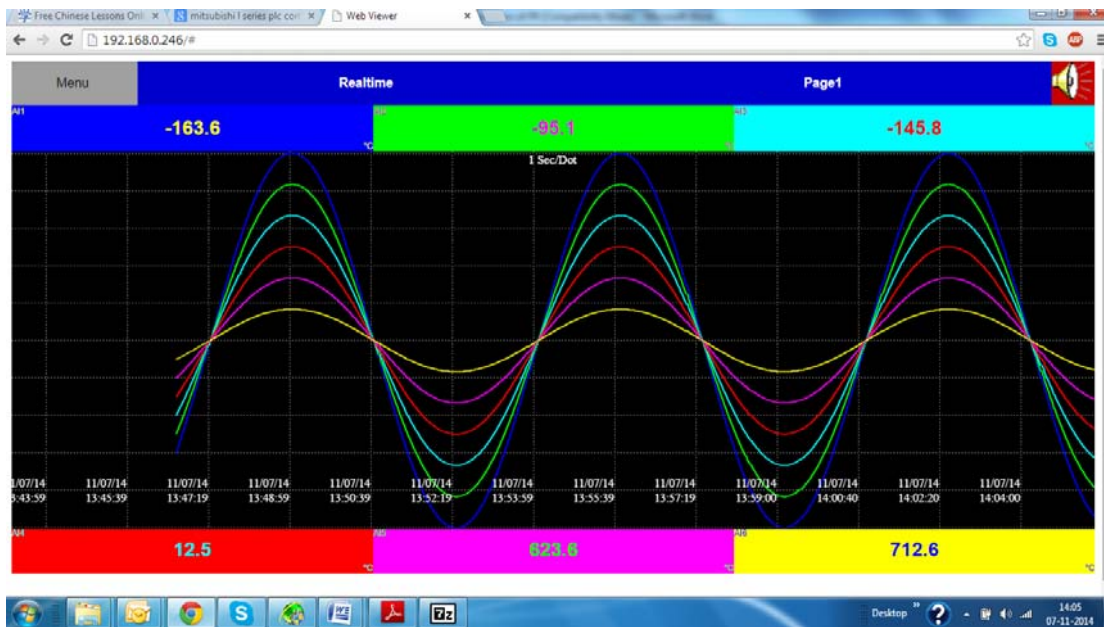
3.3 Communication with Third Party Interfaces

The Recorder has the flexibility to communicate with Third party Interfaces via protocols such as Modbus TCP/IP or Serial connections as either a Modbus Master or Modbus Slave. The detailed settings related information can be found in Chapter 4, Configuration, Section 4.5.

3.4 Information Accessibility through WEB

Web Server:

The Recorder Trend and Digital data can be viewed in any place in the world if we have Web Server connectivity. For this the Recorder should be connected to Internet with a fixed IP address provided by the Internet Service provider.



Email:

All Important Data events can sent as an email. The detailed settings related information can be found in Chapter 4, Configuration, Section 4.5.