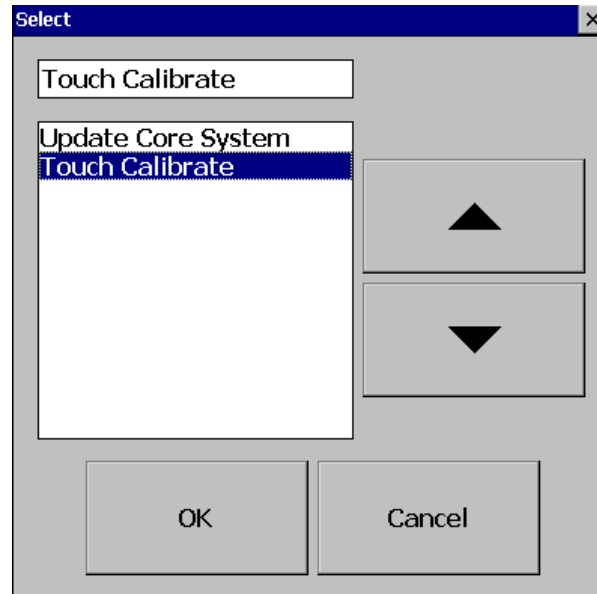


4.10.1.2 Calibrate Touch Screen

Path:  (Menu)-More-Config-System Information-Maintain

Maintain: The Maintain button is located at left lower side in System Info. page. It is the button to upgrade the firmware and Calibrate touch screen in paperless recorder



This is used to calibrate the touch screen. A “+” symbol appears in the center of the LCD screen. Carefully press and briefly hold a stylus or finger on the center of the target. Repeat this procedure as the target moves around the screen. Just touch the screen to complete the screen calibration. This procedure helps to locate pointer via touch screen and properly select the objects during operation of the recorder

