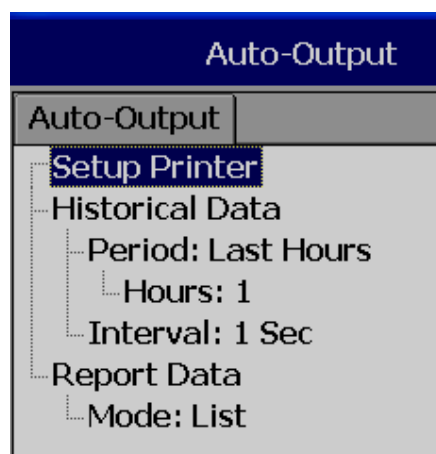


4.8 Demo

The Demo mode is a simulation mode used as a sales tool for demonstration purposes. It is set to simulate AI analog inputs and Math functions.

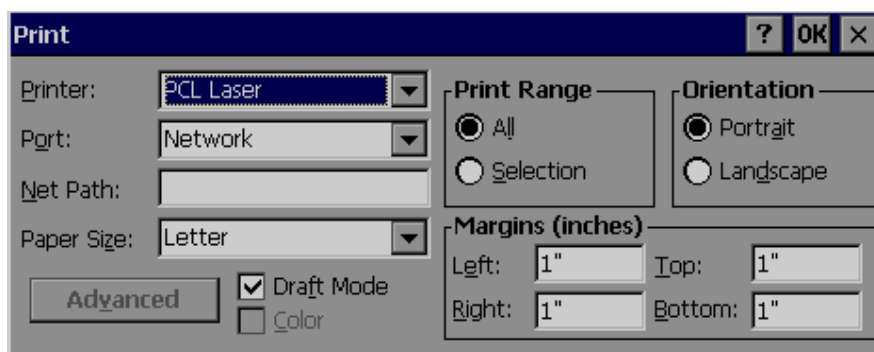
*To start the automatic demonstration, first enable **Demo mode**, then turn the power OFF and Power ON to make it effective. To stop the automatic demonstration and return to real mode with real inputs, first disable Demo mode, then turn the power off and Power ON.*

4.9 Auto-Output



Setup Printer: It is to configure printer

Select **Setup Printer** and then press the “Enter” soft button



Two kinds of printers are supported. One is USB printer for page printing and another is Serial printer for Line printing

Applications: Print Historical data, events, & Reports and snapshot directly from Paperless Recorder.

4.9.1 USB Printer

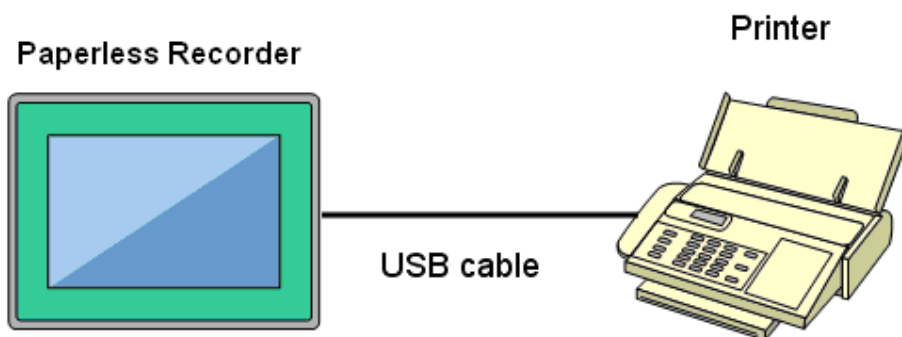
Generally, USB printer support PCL protocol. It means, it will support Page Print, but not line print. We support PCL language 4, 5 & 6

If USB printer supports ESCP protocol similar to EPSON LQ300+, then, it is possible to take line print.

Please refer Printer user manual for exact protocol details




Do not use USB printer supporting only PCL to print single line alarms, otherwise, pages will be wasted



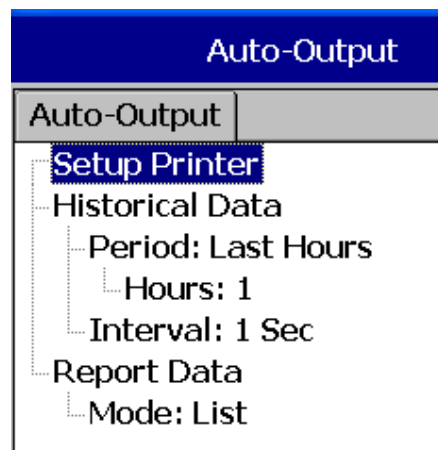
Procedure

Connect Recorder to Printer via USB cable

Power ON Printer

Path:  (Menu)-More-Config-Auto-Print, Enter

Select "Setup Printer", press "Enter" soft button



Print [?] [OK] [X]

Printer: PCL Laser

Port: Network

Net Path:

Paper Size: Letter

Advanced [X] Draft Mode [X] Color []

Print Range: ☒ All ☐ Selection

Orientation: ☒ Portrait ☐ Landscape

Margins (inches): Left: 1" Top: 1" Right: 1" Bottom: 1"

Print [?] [OK] [X]

Printer: PCL Laser

Port: ESCP Printer
PCL Inkjet
PCL Laser

Net Path:

Paper Size: Letter

Advanced [X] Draft Mode [X] Color []

Print Range: ☒ All ☐ Selection

Orientation: ☒ Portrait ☐ Landscape

Margins (inches): Left: 1" Top: 1" Right: 1" Bottom: 1"

Printer: PCL Laser, ESCP printer, PCL Inkjet available by default. Select one from the list as per printer model connected to the Paperless Recorder

Port: It shows “Network” by default. Once a printer is connected to the USB port, it will show “LPT1” for the USB printer. Select “LPT1”

Net Path: It is required to enter the correct network path here only if both Printer and Paperless Recorder are connected to a LAN network

Paper Size: A4, B5, Legal and Letter are supported

Draft mode: By default, it is selected. If more quality print is required, deselect Draft Mode

Color: Enabled for Inkjet printer

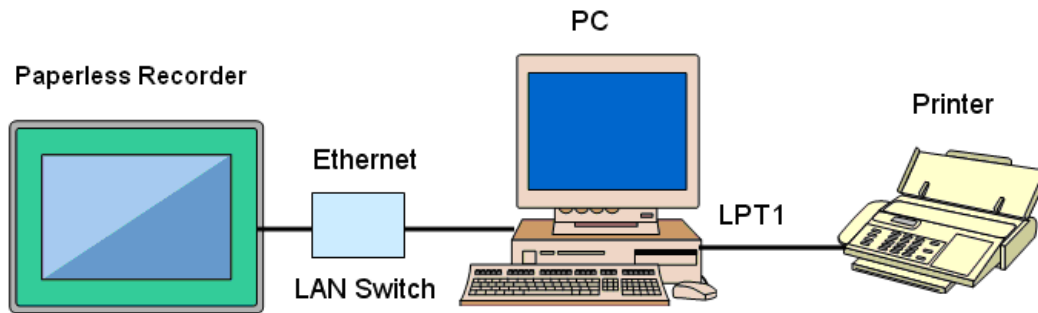
Orientation: Select Portrait/Landscape as per requirements

Note: Margins & Print Range are not working at this time.

Now, setup is ready at Paperless Recorder

4.9.2 Network Printer (LPT1)

Serial printer will print minimum one line and is generally used for printing Real time alarms. Also, it can be used for printing historical data and alarms from the Paperless Recorder. ESCP language is supported, so any printer supporting ESCP like LQ300+ can be used. The LPT1 port of a PC can be connected to a Serial printer directly. However, it needs to have a Printer driver installed in PC first, and share it for network use via Ethernet.



Procedure

Connect Paperless Recorder to PC via Ethernet

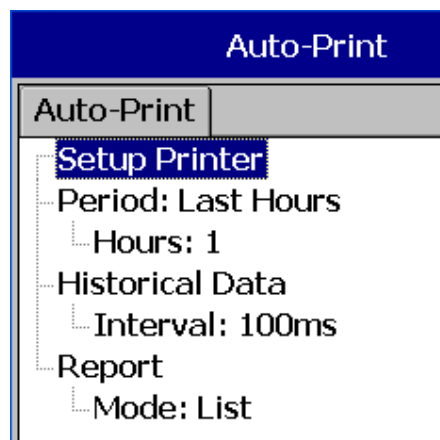
Install Printer driver in PC. Share Printer for network use

Connect Printer to PC via LPT1

Power ON Printer

In Paperless Recorder, at Path, select  (Menu)-More-Config-Auto-Print, Enter

Select "Setup Printer", press "Enter" soft button



Print [?] [OK] [X]

Printer: PCL Laser

Port: Network

Net Path:

Paper Size: Letter

Advanced [X] Draft Mode [X] Color []

Print Range

☒ All

☐ Selection

Orientation

☒ Portrait

☐ Landscape

Margins (inches)

Left: 1" Top: 1"

Right: 1" Bottom: 1"

Print [?] [OK] [X]

Printer: ESCP Printer

Port: PCL Inkjet

Net Path: PCL Laser

Paper Size: Letter

Advanced [X] Draft Mode [X] Color []

Print Range

☒ All

☐ Selection

Orientation

☒ Portrait

☐ Landscape

Margins (inches)

Left: 1" Top: 1"

Right: 1" Bottom: 1"

Select ESCP printer.

Then, enter the proper Net Path. Ex: \\PC1\LQ300

PC1 is computer name and LQ300 is shared printer driver for network use

Now, the setup is ready at the Paperless Recorder

4.9.3 Print Historical data

Configure USB Printer or Network printer as explained in earlier section

In Paperless Recorder, at Path, select  (Menu) -More-Config-Auto-Output, Enter

Auto-Output	
Auto-Output	
<ul style="list-style-type: none"> Setup Printer Historical Data <ul style="list-style-type: none"> Period: Last Hours <ul style="list-style-type: none"> Hours: 1 Interval: 1 Sec Report Data <ul style="list-style-type: none"> Mode: List 	

Period: Select Last hours or Last days

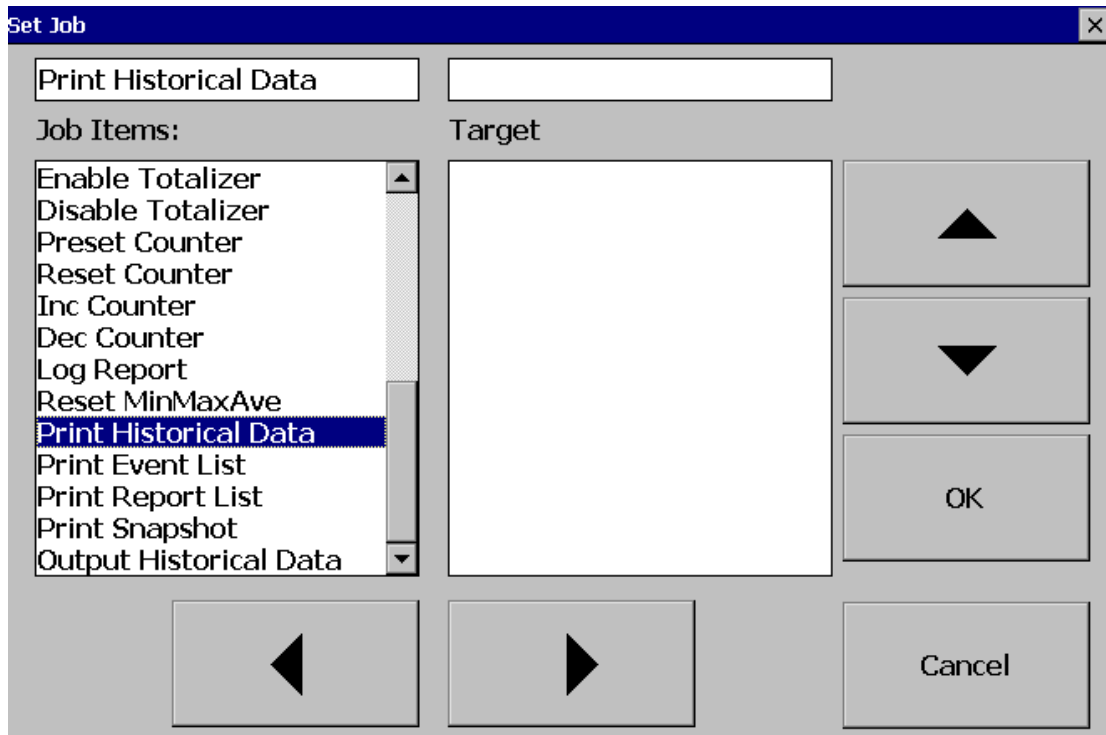
Hours/Days: Select no. of hours or no. of days as per above selection

Interval: Select intervals of 100 msec/1 sec/2 sec/ 5sec/ 10 sec/ 20 sec/ 30 sec/ 1 min/ 5 min/ 10 min.

The Print function is available in the Job list and can be initiated in various ways.

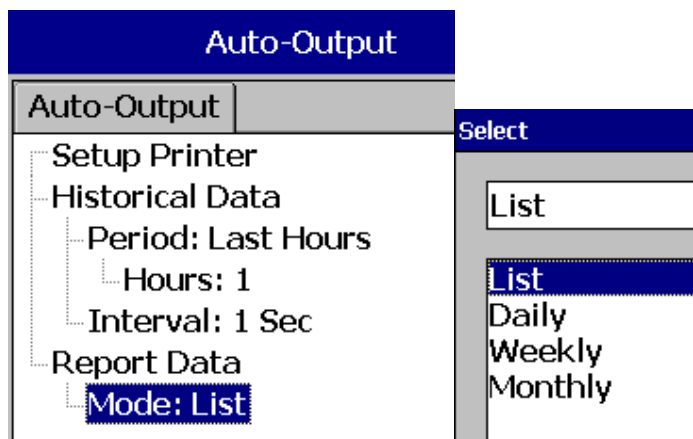
Ex: Print historical data of last 1 hr. and do this every day at 8.00 hrs

Timer					
1	2	3	4	5	6
<ul style="list-style-type: none"> Type: Daily Action: Enable Time <ul style="list-style-type: none"> Hour: 8 Min: 0 Sec: 1 Job1: Print Historical Data Job2: No Action 					



4.9.4 Print Reports


In Paperless Recorder, at Path, select  (Menu)-More-Config-Auto-Output, Enter



In the **Mode**, select which kind of Reports are required. Available options include Daily Reports, Weekly Reports and Monthly Reports

Timer					
1	2	3	4	5	6
Type: Daily					
Action: Enable					
Time					
Hour: 8					
Min: 0					
Sec: 1					
Job1: Print Report List					
Job2: No Action					

4.9.5 Print Snapshot

 (Menu)-More-Operate-Print Snapshot

Menu	
Realtime	
Mode	Dump
Alarm	Clear
Status	Operate
History	Config
Event	Stop
More	ShutDown

Operate			
Print Snapshot			
Job Items:	Target		
Enable Totalizer Disable Totalizer Preset Counter Reset Counter Inc Counter Dec Counter Log Report Reset MinMaxAve Print Historical Data Print Event List Print Report List Print Snapshot Output Historical Data		▲	▼
		OK	
◀	▶	Cancel	