


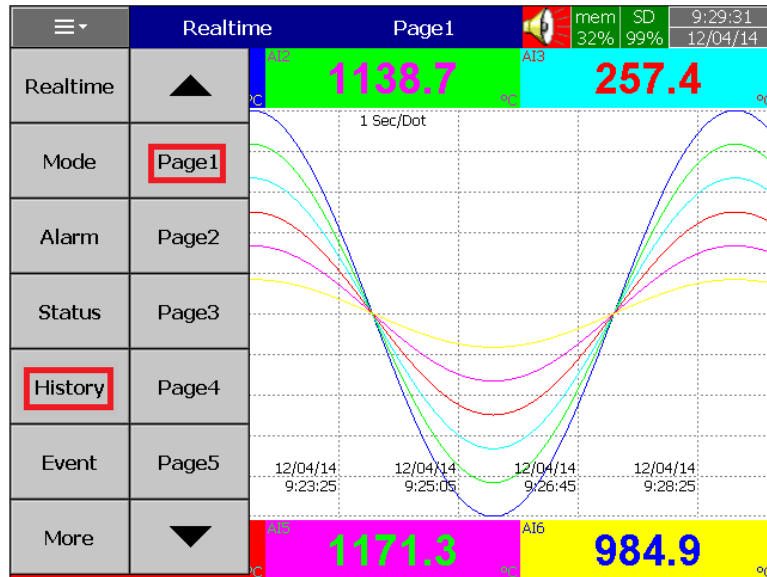


### 3.5 Handwriting Messages on Trend Screens

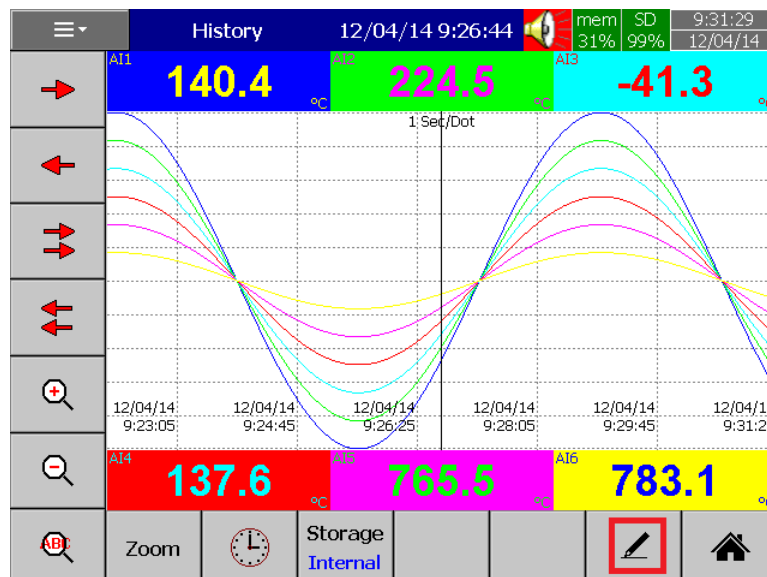
Handwriting Messages on Trend Screens is very handy for process associates to highlight important events.

The User can write handwritten messages using a stylus on Historical Trend screens. This is shown in the below picture.

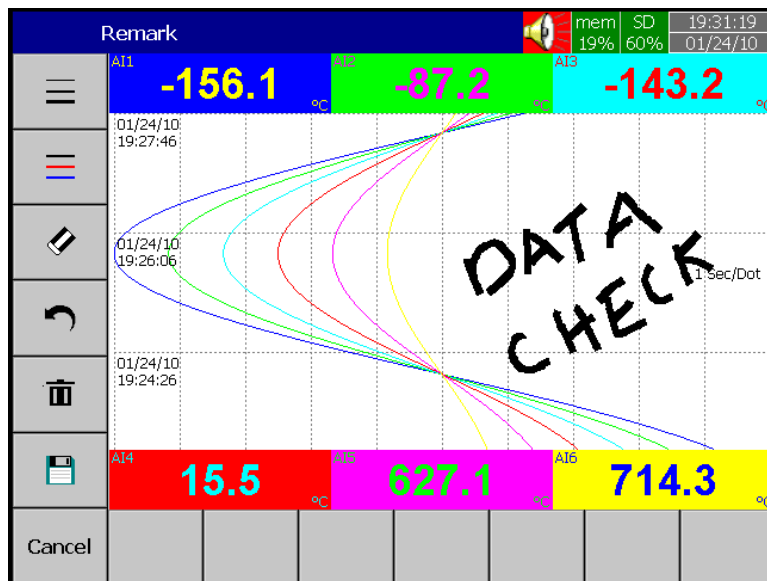
When the User navigates through  (Menu) -  History  Page 1, as shown in the below screen.



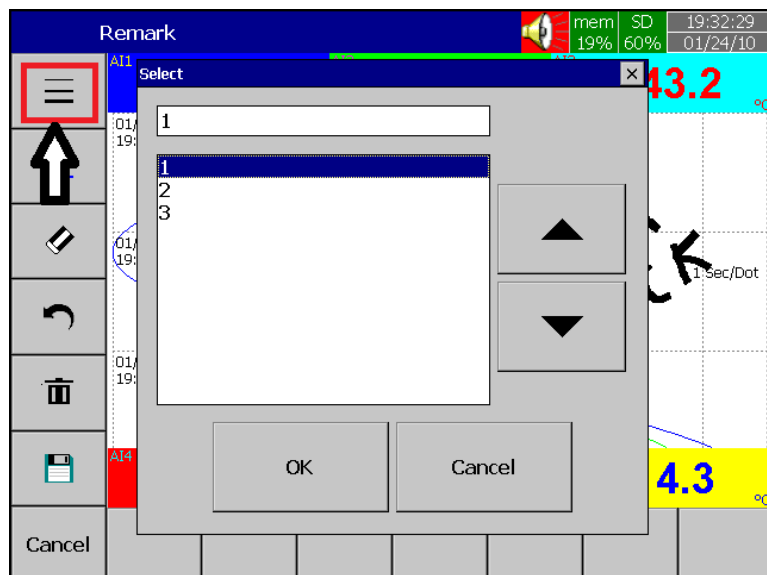
If the User wants to write a message, they can press the pen symbol as shown in the red square in the screen below



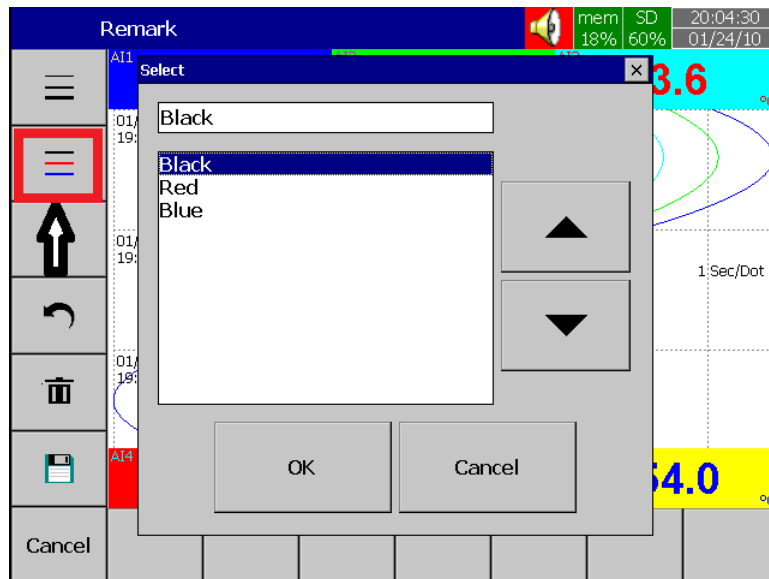
Then using the stylus, the User can write any message in Historical Trend Pages as shown below.



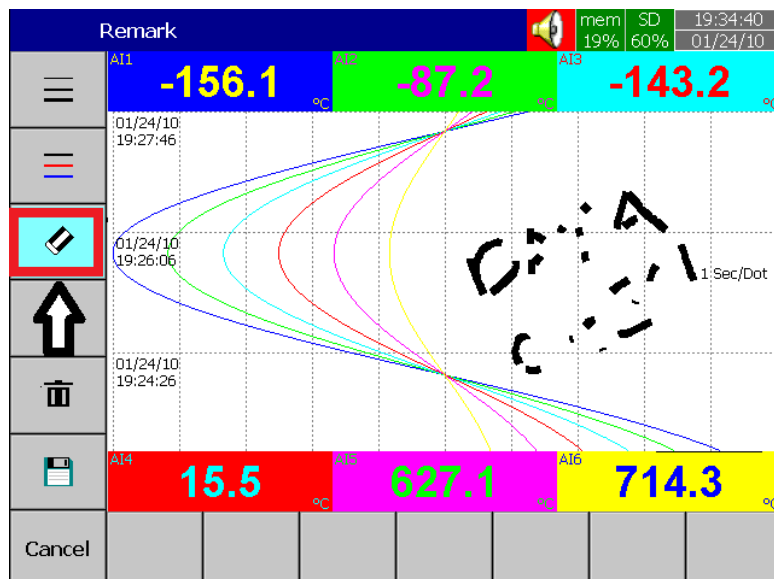
If the User wants to change the width of the written message, he/she can choose the width of pen as shown in the screen below. The menu to change the width is shown by the arrow pointing to the red box.



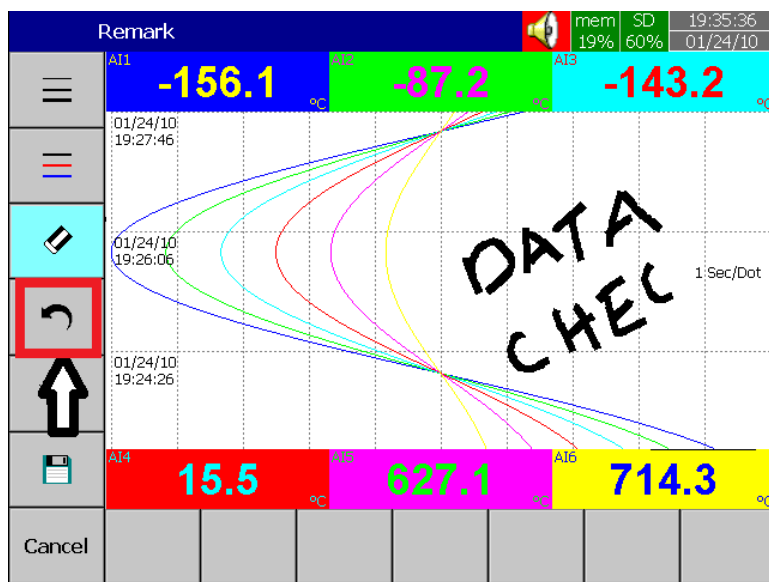
If the User wants to change color of the pen, he/she can change it by pressing the menu shown in the red box in the picture below.



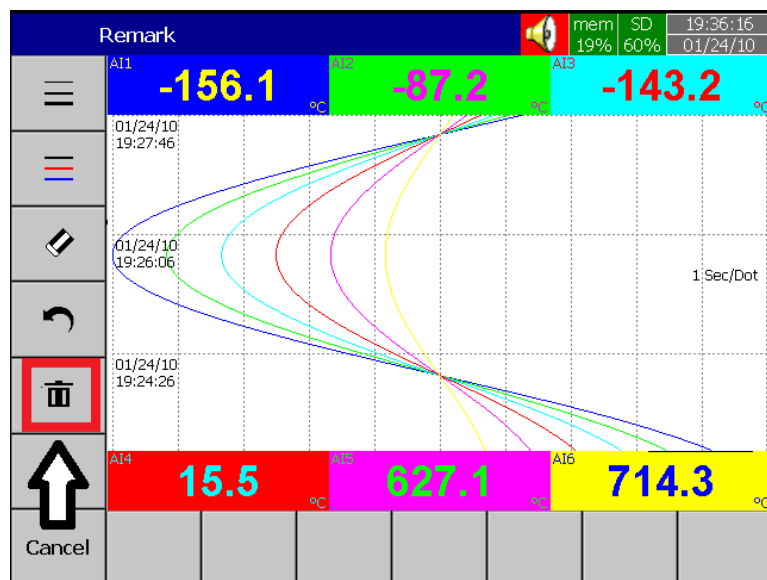
If the User wants to erase part of a message, he/she can do this by pressing the menu (shown in the red box in the picture below), and erase part of the message.



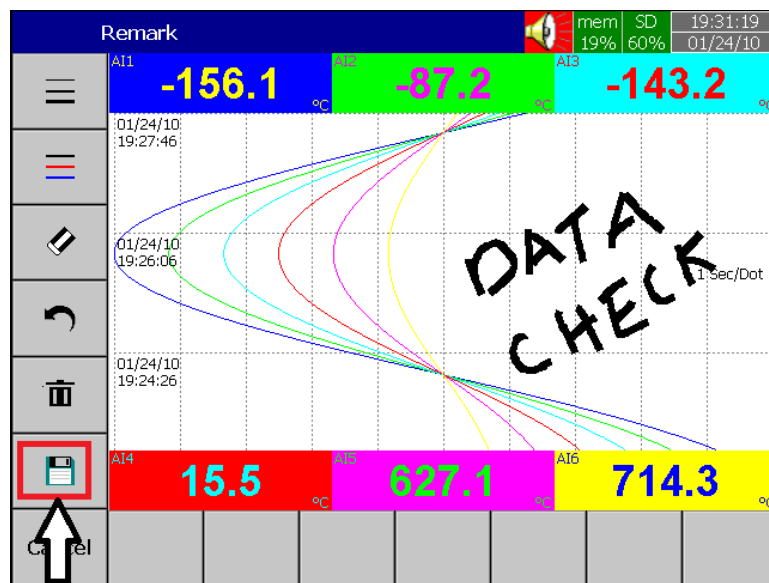
If the User wants to undo part of a message, he/she can do this by pressing the undo symbol (shown in the red box in the picture below). This will undo the last part of the message.



If the User wants to delete the written message, he/she can this do by pressing the delete symbol (shown in the red box in the picture below), and this will delete the written message.



If the User wants to save the written message, he/she can do this by pressing the “save” symbol (shown in the red box in the picture below). This will save the written message.



### 3.6 Custom Edited Display Screens

(We call it a Custom Page on the device and Custom Page Editor on PC software)

In Plus versions, the PC software Panel Studio allows users to have custom edited displays linked with Analog and Digital Tags.

