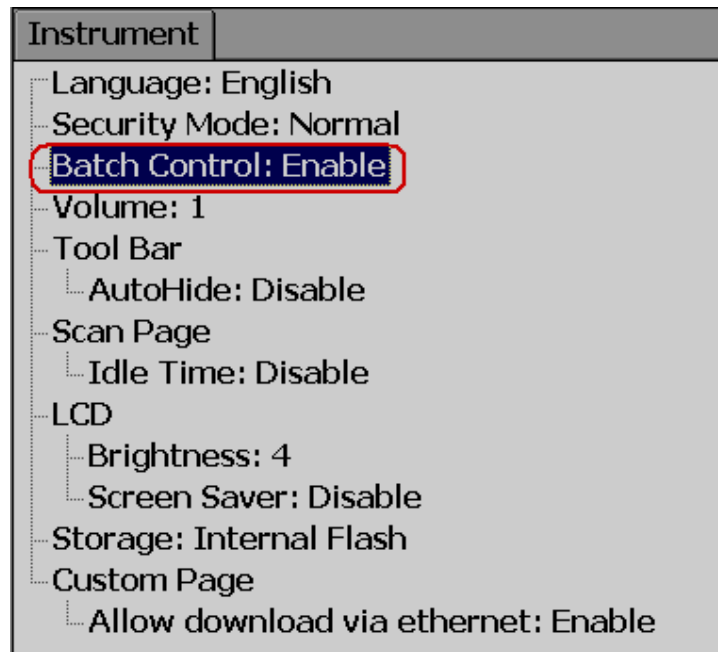


4.11 Batch Control

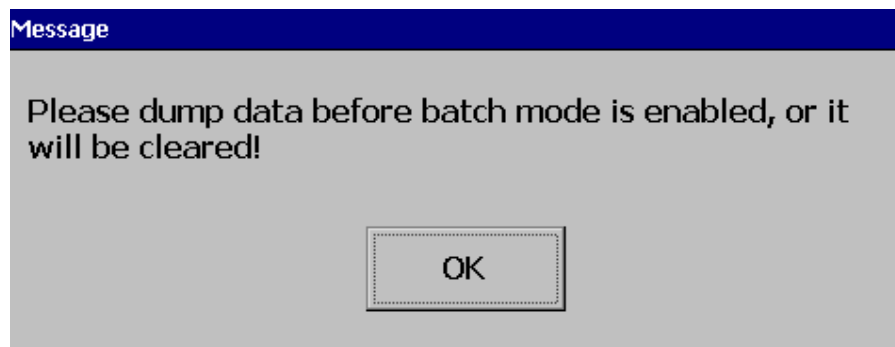
This feature is to store data in a different folder for every batch and archive data later with reference to a batch.

Path:  (Menu) - More-Config- Instrument

Select Batch Control and press “Enter” key. Select “Enable”. Press “Ok”




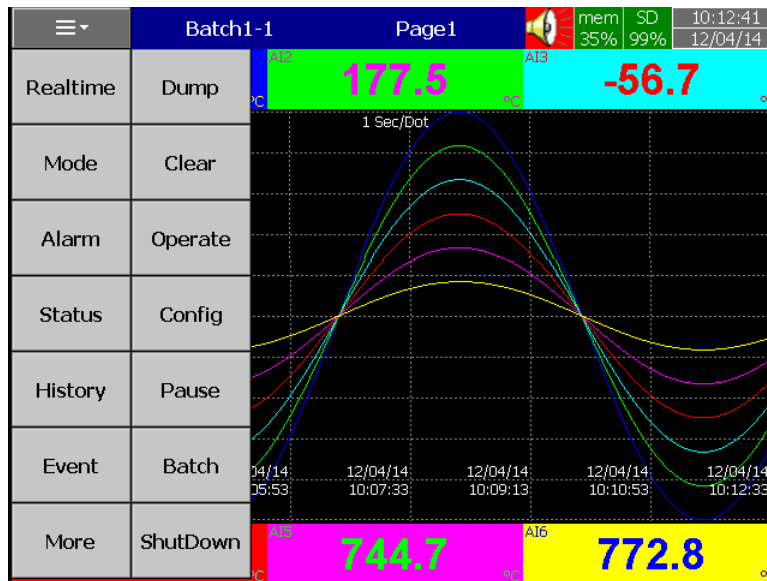
Press “Back”





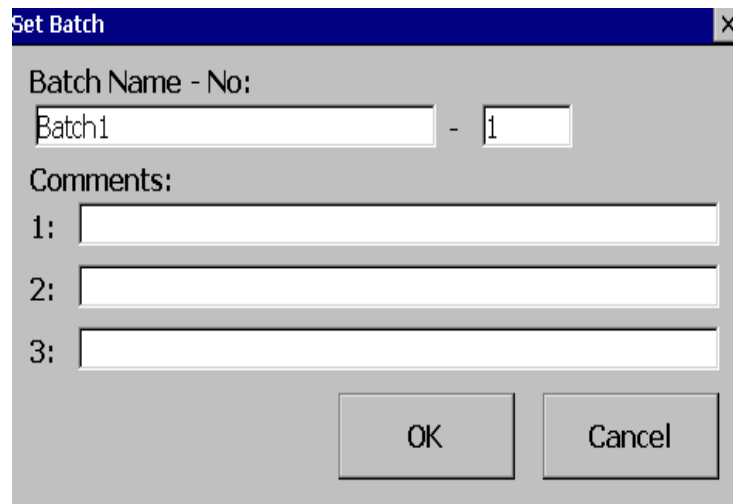
Press “OK”, then, press “Home” Soft key to save these settings

Power the recorder OFF then ON, then in the  (Menu), the Batch soft key will be shown as below



Note: “Batch” soft key will appear only after Batch Control enabled as explained above

Press on Batch and it shows the following screen



Set Batch

Batch Name - No:
 -

Comments:


1:

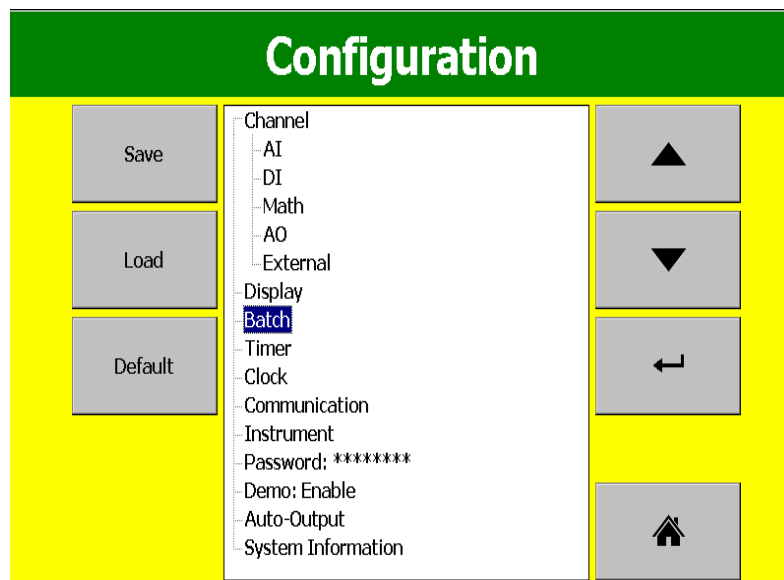
2:

3:

OK Cancel

Operator can enter a maximum of three comments for any batch.

In the  (Menu)-More-Config, select "Batch", press "Enter" key



Configuration

Save Load Default

Channel
 AI
 DI
 Math
 AO
 External
 Display
Batch
 Timer
 Clock
 Communication
 Instrument
 Password: *****
 Demo: Enable
 Auto-Output
 System Information

Navigation buttons: Up, Down, Left, Home

It will show the Batch control settings as shown below

| | |
|------------------------|--|
| Batch | |
| Name: Batch1 | |
| Lot Number: 1 | |
| Auto Increment: Enable | |
| Jobs | |
| Start: No Action | |
| Stop: No Action | |


Name: Enter Batch name. A maximum of 18 characters is allowed. By default, the name is Batch1.

Lot Number: Enter the Lot number. If Auto increment is enabled, then Lot numbers will be incremented automatically by the recorder, Batch1-1, Batch1-2, Batch1-3 etc. during every start of a new batch

Jobs: Two events, Start, Stop are available


Start: Start means Jobs that should be done during start of a new batch

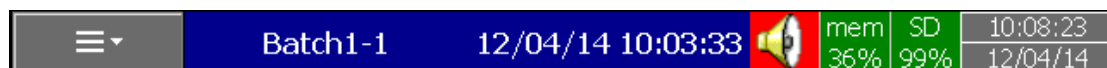
Stop: Stop means Jobs that should be done during stop of a batch

Note: When batch control is enabled, the recorder will be in Pause mode by default initially and it requires Starting of the recorder from the Menu by pressing at  (Menu) - More than "Start". When recorder is not logging any data, Pause status shall be shown in the Top right area of the recorder as shown below



How to do the batch control

Press on  ("Menu"), "More", then "Start". Batch number will be shown in the recorder Top area.



To Stop this batch, press on "Menu", "More", then "Pause". It gives a message "Saving data" and updates batch data in the internal memory of the paperless recorder.

4.11.1.1 Batch Example-1

The operator wants to start a batch every day at 8.00am and stop the batch at 12.00am.

Configuration


Timer1

| | |
|-----------------|------------------|
| Type: Daily | Action: Enable |
| Time – Hour: 8 | Min: 0 Sec: 1 |
| Job1: Start | |
| Job2: No Action | |

Timer2

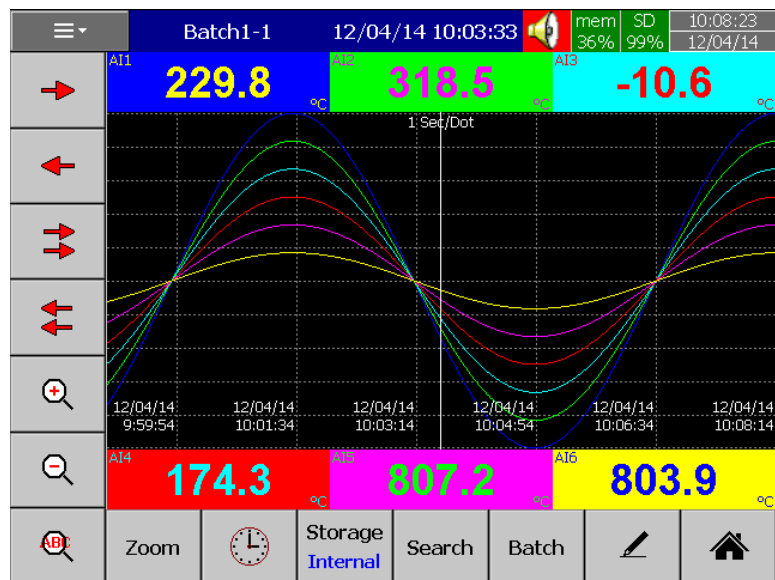
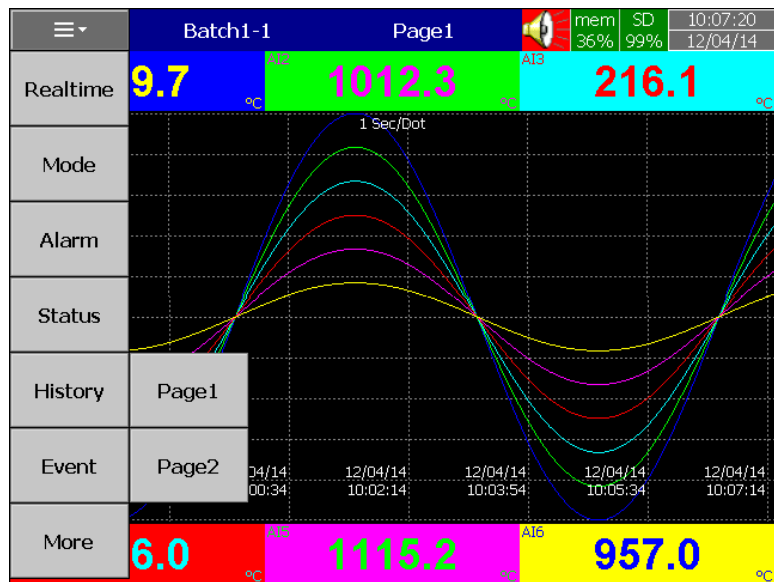
| | |
|-----------------|------------------|
| Type: Daily | Action: Enable |
| Time – Hour: 12 | Min: 0 Sec: 1 |
| Job1: Pause | |
| Job2: No Action | |

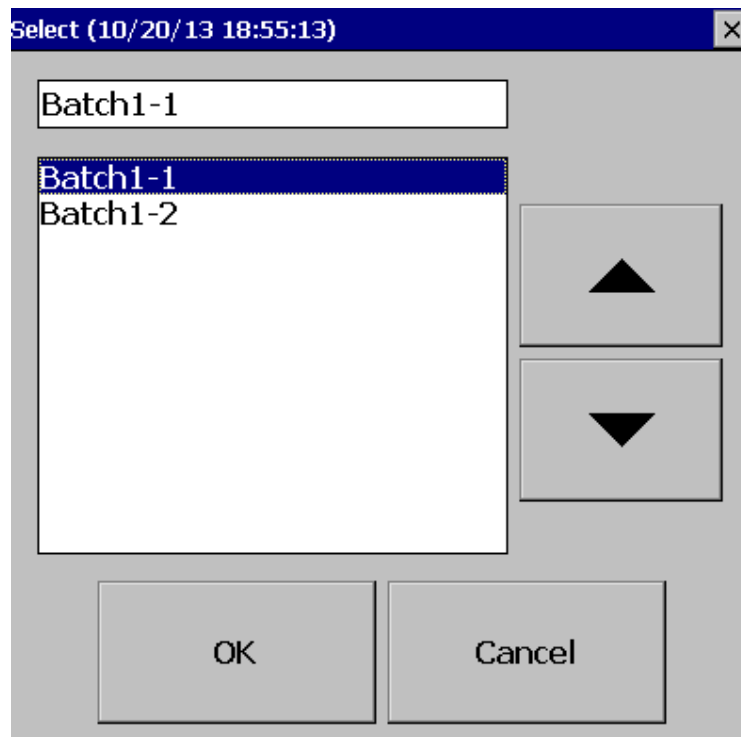
How to view batch data in Recorder

Press on  (Menu)-History-Page1


Press “Search”, select required Batch and press “Ok”

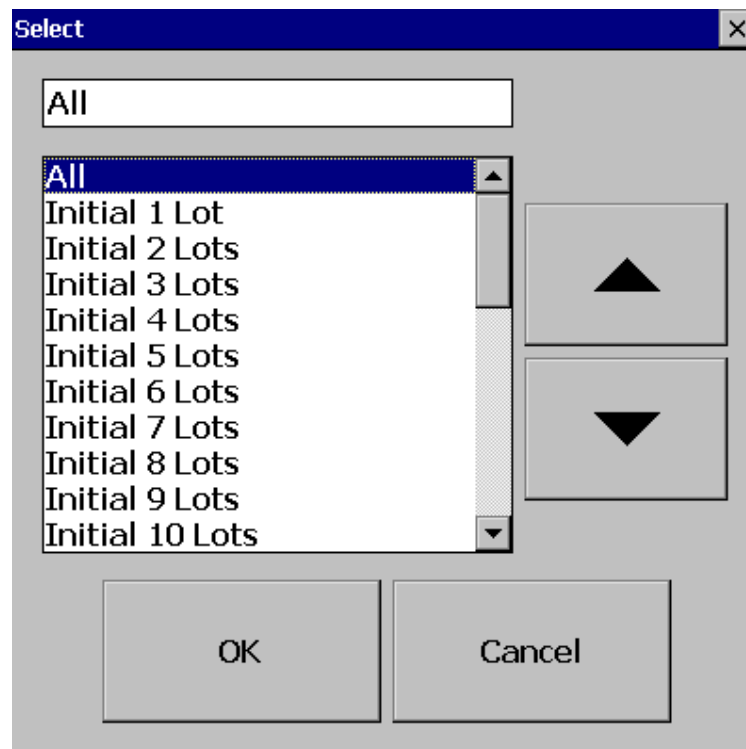
Batch details including lot number can be archived by pressing soft key “Batch”





How to Dump Batch data to external USB memory

Press on  (Menu)-More then press on Dump

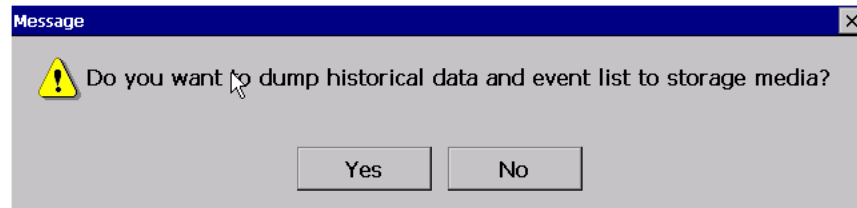


Select "All" or required lots and press "OK"

For ex: Batch1-1, Batch 1-2, Batch1-3 are available
Initial 1 Lot means, Batch1-1
Initial 2 Lots means, Batch1-1 and Batch1-2
Initial 3 Lots means, Batch1-1, Batch1-2 and Batch1-3

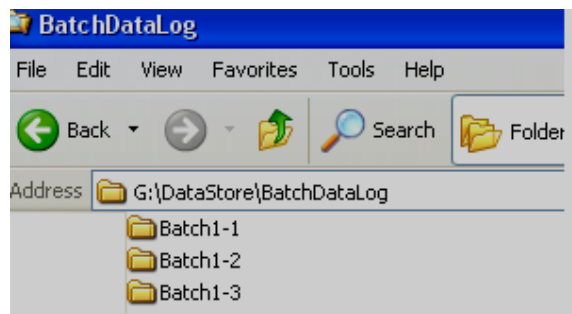
Note: Provision not available to dump only specific lot.

Please refer Instrument->Data Transfer-> Transfer and Remain



Press on “Yes” to dump data from internal memory to external SD Card or USB memory.

If you have 3 batches, let’s say Batch1-1, Batch1-2 and Batch1-3, then you can see three different folders in the external USB memory card after completing of dump



Please note that the data available in USB memory is in a proprietary format to avoid any kind of tampering. You will need PC software to view this data.